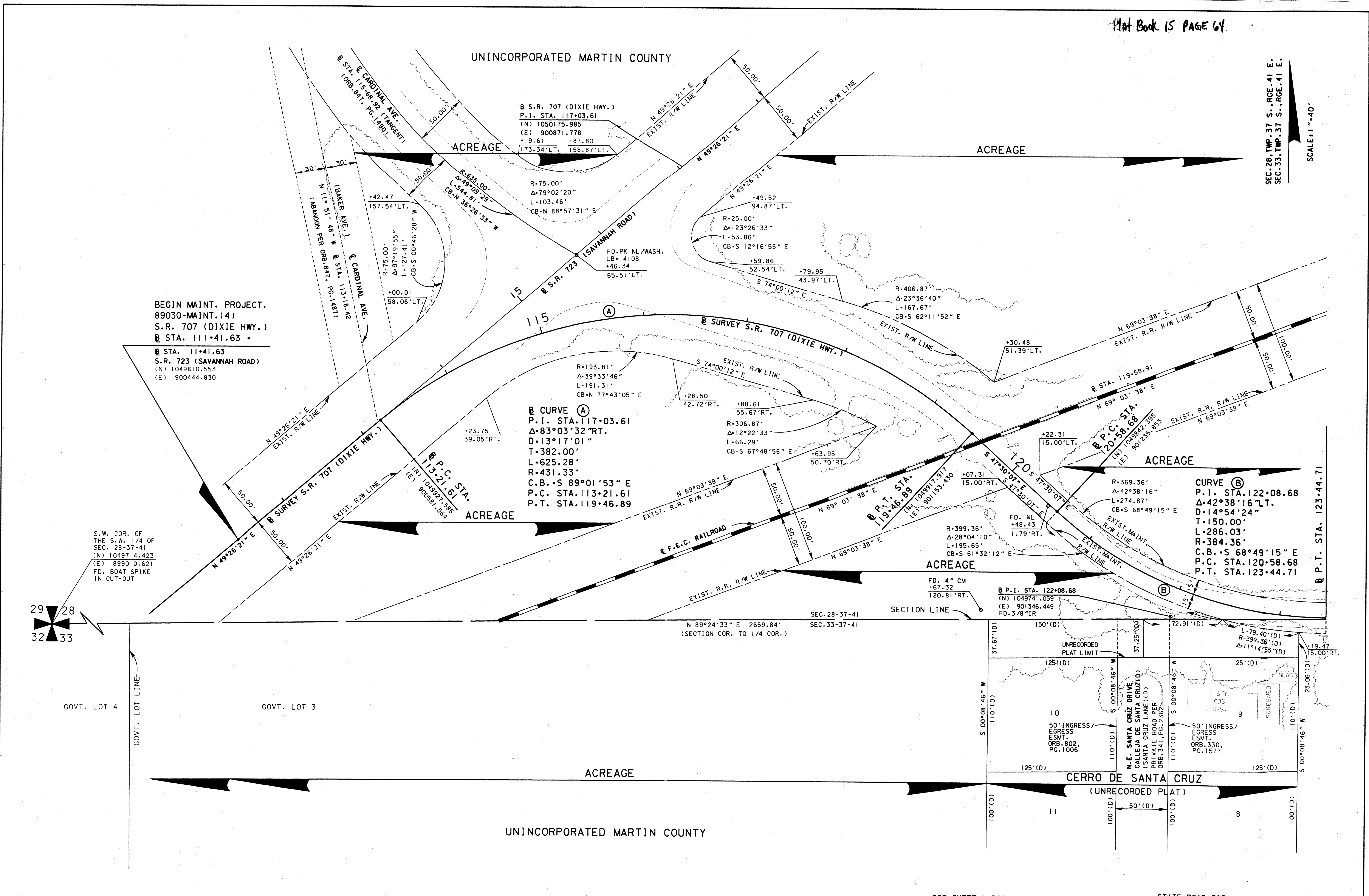


SEC. 28, TWP. 37 S., RGE. 41 E.
 SEC. 33, TWP. 37 S., RGE. 41 E.
 SCALE: 1" = 40'

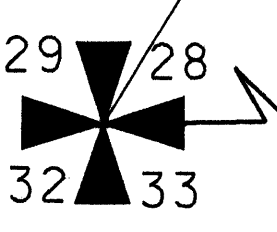


BEGIN MAINT. PROJECT.
 89030-MAINT.(4)
 S.R. 707 (DIXIE HWY.)
 STA. 111+41.63 -

STA. 11+41.63
 S.R. 723 (SAVANNAH ROAD)
 (N) 1049810.553
 (E) 900444.830

Curve A
 P.I. STA. 117+03.61
 Δ=83°03'32" RT.
 D=13°17'01"
 T=382.00'
 L=625.28'
 R=431.33'
 C.B.+S 89°01'53" E
 P.C. STA. 113+21.61
 P.T. STA. 119+46.89

Curve B
 P.I. STA. 122+08.68
 Δ=42°38'16"
 D=14°54'24"
 T=150.00'
 L=286.03'
 R=384.36'
 C.B.+S 68°49'15" E
 P.C. STA. 120+58.68
 P.T. STA. 123+44.71



| | | | | | |
|--|--|------------------------------------|--|--|--|
| MAINTENANCE MAP FLORIDA DEPARTMENT OF TRANSPORTATION RIGHT OF WAY MAPPING | APPROVED BY: <i>J. Spind</i> DATE: 5/12/03 DISTRICT RIGHT OF WAY SURVEYOR | REVISION: BY DATE REVISION BY DATE | PRELIM. L. CEFOLIA 8/17/01 FINAL L. CEFOLIA 4/03/03 CHECKED J. EDGAR 4/07/03 | SEE SHEET 1 FOR LEGEND AND GENERAL NOTES STATE ROAD 707 (DIXIE HWY.) FROM SAVANNAH ROAD TO ARCH STREET SECTION 89030-MAINT.(4) | MAPS PREPARED BY LB# 696 KIMLEY-HORN AND ASSOCIATES FIELD BOOK NO.'S SEE SHEET 1 W.P.I. No. N/A SCALE: 1" = 40' ITEM/SEGMENT NO. 4035911 SHEET 3 OF 12 |
| | MAINTENANCE MAP | | FEDERAL PROJ. NO. N/A SECTION 89030-MAINT.(4) | | STATE ROAD 707 (DIXIE HWY.) MARTIN COUNTY |
| | FLORIDA DEPARTMENT OF TRANSPORTATION RIGHT OF WAY MAPPING | | REVISION: BY DATE REVISION BY DATE | | STATE ROAD 707 (DIXIE HWY.) MARTIN COUNTY |
| | APPROVED BY: <i>J. Spind</i> DATE: 5/12/03 DISTRICT RIGHT OF WAY SURVEYOR | | REVISION: BY DATE REVISION BY DATE | | STATE ROAD 707 (DIXIE HWY.) MARTIN COUNTY |